

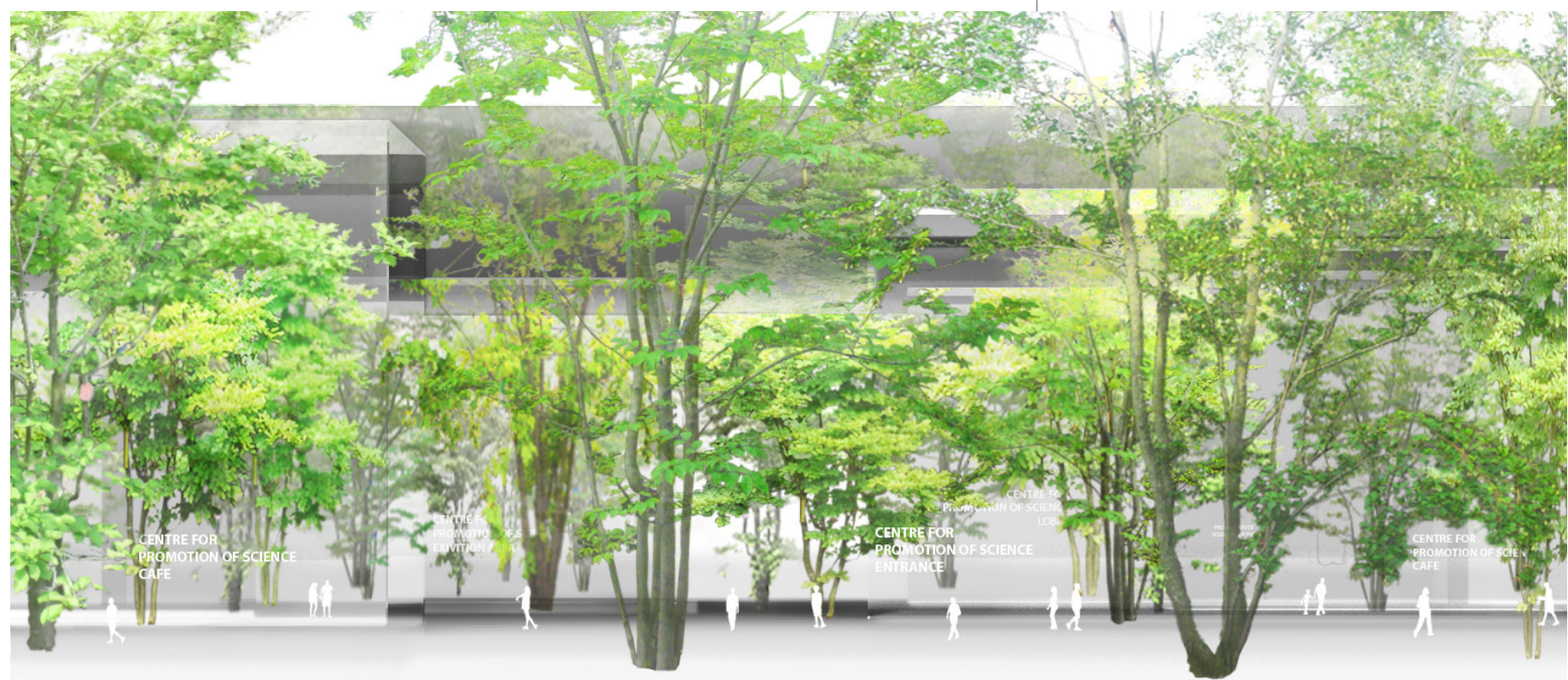
LOBBY STREET



CAFÉ



EXHIBITION AREA WITH PROJECTION



ENTRANCE

Science Garden is located at the Northern end of the site, well-connected to the exhibition area, the exhibits promote the discipline to the on-goers. In the Science Garden, the relationship of the glass patio and the surrounding are inverted, and renders a transition of the indoors to the outdoors. Different types of trees are planted to create diversity in the outdoor space. The space under the roof cantilever in front of the Lobby street is also used as a casual outdoor mingling area and an exhibition area.



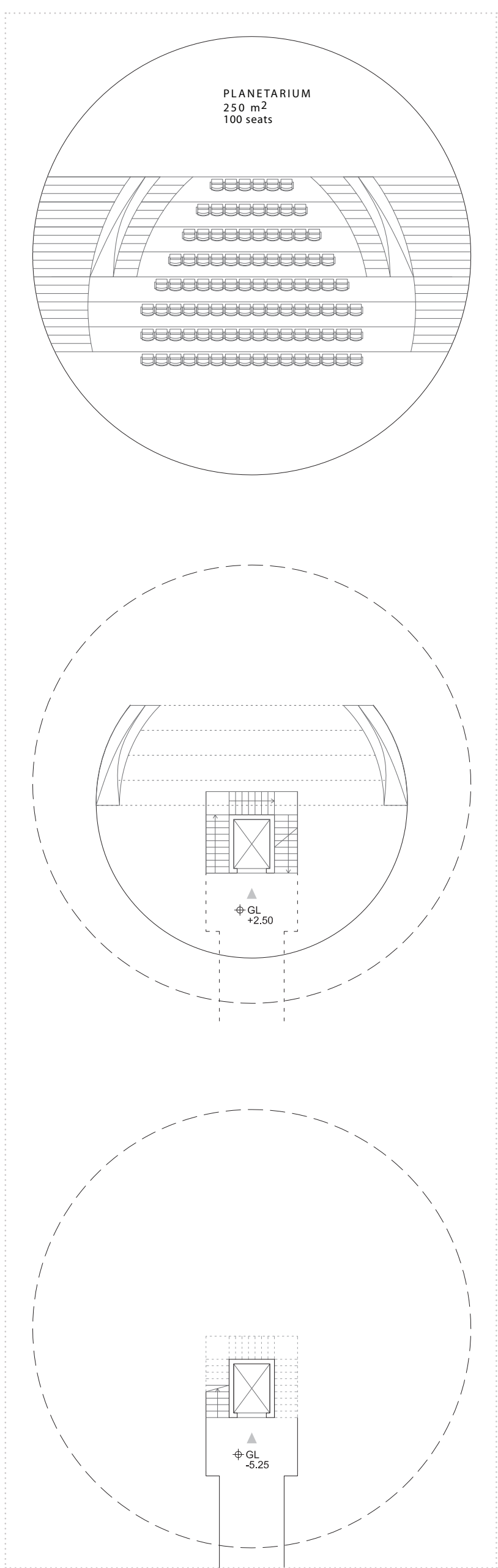
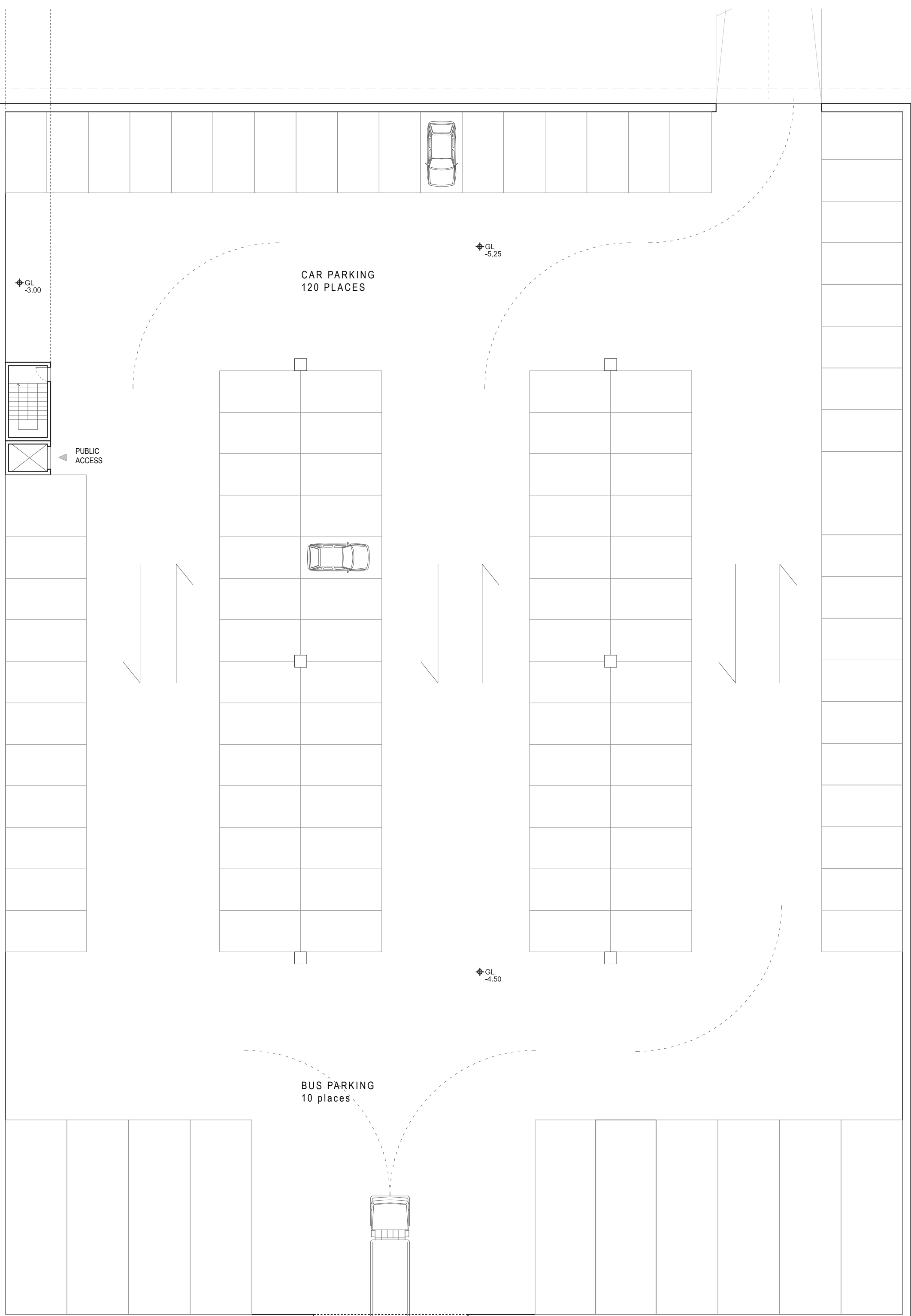
SCIENCE GARDEN

With the 15m height of the ceiling and the multiple glass patios, the inner space is filled with natural light, and at times when required, solar penetration can be controlled by adjustable screens.

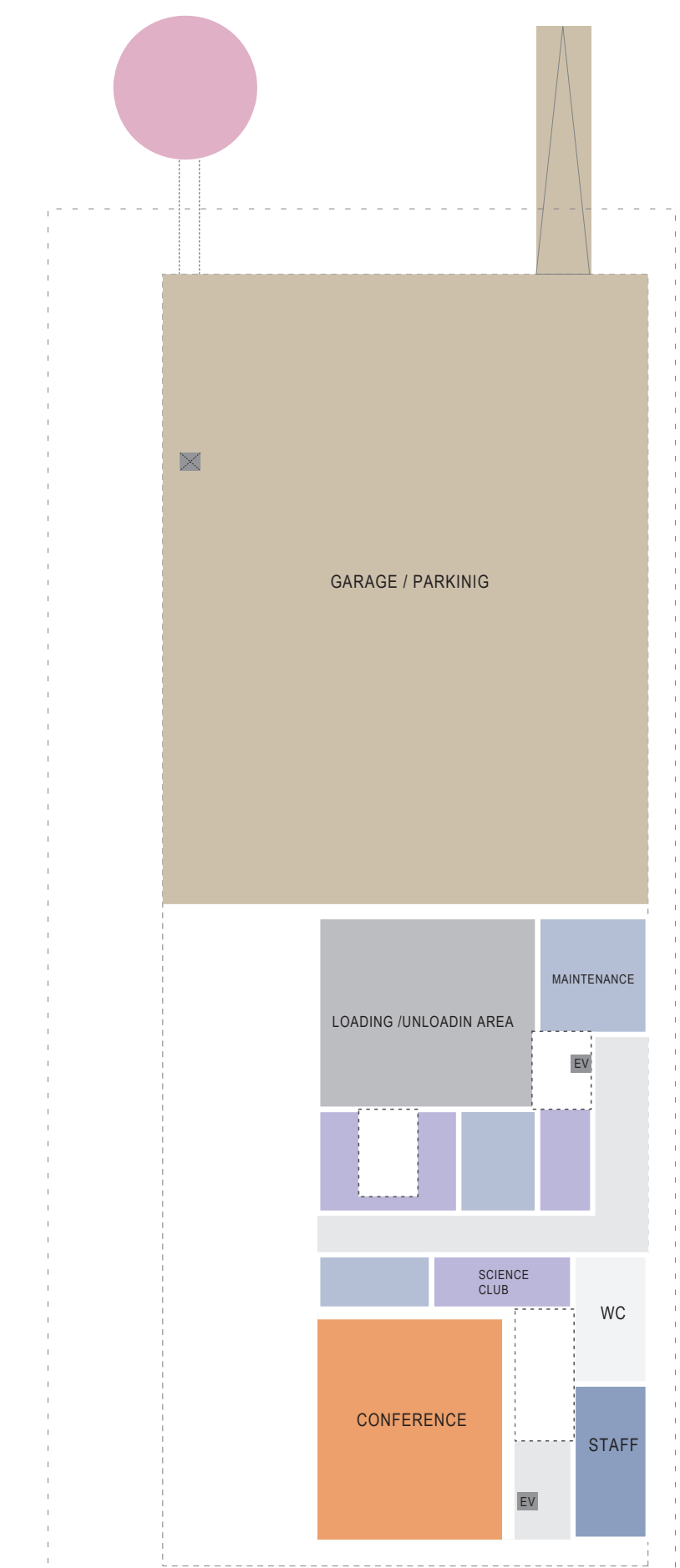


NATURAL DAYLIGHT

DAYLIGHT CONTROL



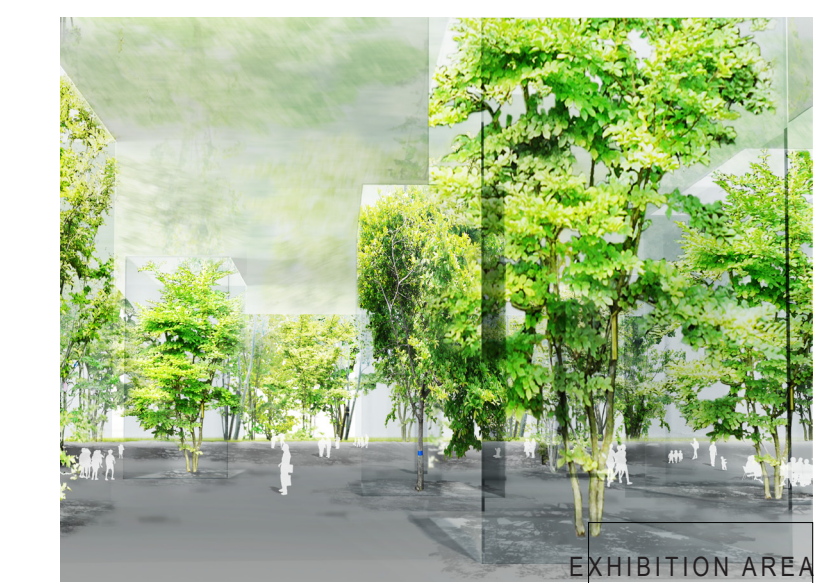
PLANETARIUM 1:200



FUNCTIONAL ZONING PLAN -1



EXHIBITION AREA



EXHIBITION AREA